

Dynamic SCSI Switch

Share a tape drive or library between systems Automatically

Simple, dependable way to maximise the value of a SCSI tape drive.

Switching is dynamic - no physical or electronic switching is required.

Hardware only solution - no special software or patches.

Simple installation.



40 MB/sec HVD, 160MB/sec LVD bandwidth - full drive performance retained..

Continuous availability to both hosts - 'drive in use' message sent to second host.

Save on hardware and maintenance costs whilst gaining space.

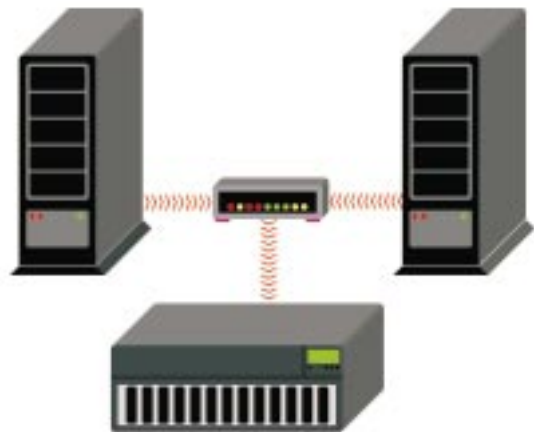
Host fail-over protection for SCSI Raid or Tape Libraries.

Available as a third and/or fourth host attachment for IBM 3590 drives.

To save money on Hardware and Maintenance costs it can be desirable to share a Tape Drive or high value peripheral, between two or more host computers. However, it is generally not possible to connect the SCSI bus of one host computer to that of another via the shared peripheral.

Switches are used to share Tape Drives between hosts, but the control of switching (when and how to switch, and switched termination) can be problematic. Dynamic SCSI Switches overcome these problems by allowing peripherals to be connected to both hosts simultaneously, whilst controlling access.

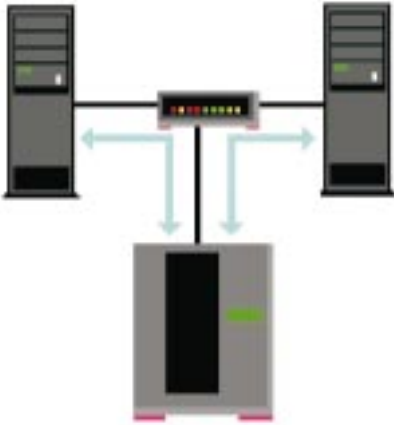
Using the SCSI Reserve/Release mechanism, the drive is connected simultaneously to all hosts and shared between them. If the drive is in use by one host and another host attempts access, it will receive a *device reserved* or *busy* response, until the original task is complete.



Share a Tape Drive or Library

All Avax Dynamic SCSI Switch solutions are 100% compatible with IBM AS/400, RS/6000, Microsoft NT, HP 9000, Sun, DEC Alpha and most other computer systems.

Eliminates bus contention, by providing SCSI bus isolation between the hosts.



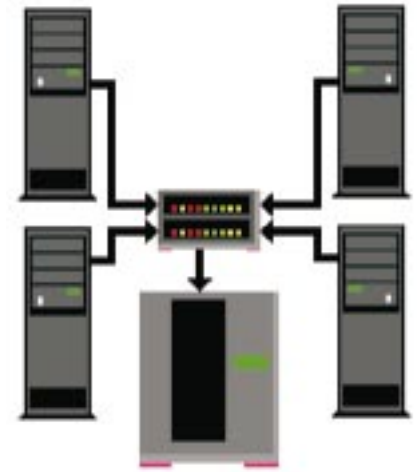
Backup from one host / Restore to another - Efficient method of transferring data.

Each host believes it owns the tape drive with backups scheduled from normal host applications. The Dynamic SCSI Switch will work automatically with most backup software.

All the connections are fast wide SCSI 3, which allows up to 160 Mbyte per second transfer rate.

The informative LED's provide data on the current Bus Activity, Bus Ownership and Termination Power.

This compact solution is available in either black or white and can be supplied as a desktop, rackmount or in OEM integration formats.



*Share a Tape drive between:
Three or four
AS400 / NT / Unix Systems*

**Supported drives include:
IBM 3590, IBM 3570, 3490, Fujitsu, StorageTek,
Qualstar, Overland Data, DLT, AIT and 8mm.**

SPECIFICATIONS

Performance -

Transfer Rate -

40 MB/Sec HVD, 160MB/sec LVD

Reliability -

Expected MTBF of 200,000 hours
(verification ongoing)

Interface -

LVD or HVD, Fast-Wide SCSI 3, 68 way Micro 'D' female connectors

Power -

110-240 VAC

Auto-sensing 50-60 cycles

Environmental Conditions -

Operating 5°C to 40°C

Non - Operating -40°C to 70°C

Physical Characteristics -

Enclosure has an A4 Footprint

Dimensions

2 way:

292 mm x 211 mm x 64mm

4 way:

292 mm x 211 mm x 106mm

Weight 4kg

Agency Certifications

UL, CSA, FCC and CE

Warranty

Two year return to base

Avax International

PO Box 542

Hillsburgh, Ontario N0B 1Z0 Canada

Phone: 647-367-1039 or 800-443-4542

Fax:: 647-438-2242

E-Mail: sales@avax.com



AVAX
INTERNATIONAL