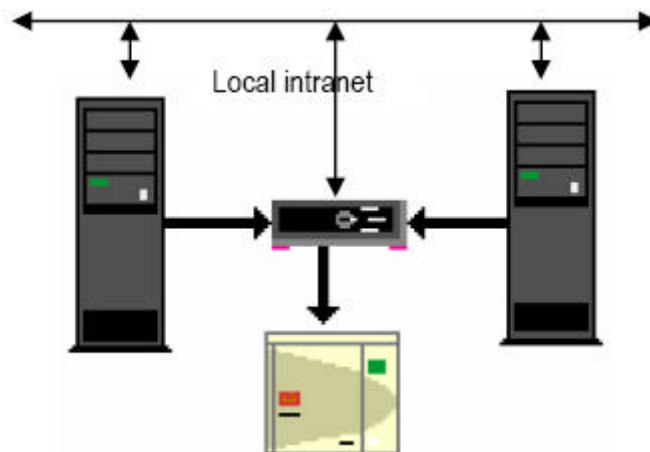




## Web Controlled SCSI Switch

### USES:

- Share SCSI Devices between Multiple Hosts to maximize the peripheral investment
- Controlled automatically via the intranet—The Switch acts as a Web Server, and its configuration can be controlled using standard Windows (or Unix) task scheduler
- Can be used to provide *failover* or *failsafe* protection when sharing SCSI RAID or Tape Libraries between an active host and a dormant host
- As a low cost alternative to a SAN
- Matrix Switches 2X2, 3X2 and 4X2 available.



Two or more Servers share a SCSI Tape Library.

Each Server has control of the Switch via the local intranet.

Any Server can control the Switch position by running small programs using the standard Window's scheduler

## FEATURES

- 160 Mbytes/sec Bandwidth
- SCSI busses are totally isolated from each other, re-timed and regenerated, so that they can run the full length in either direction
- Each Bus segment is individually terminated. LVD busses have multi-mode termination
- SCSI bus type—LVD, HVD or SE SCSI, *or a mixture of these busses in the same switch*
- Choose the method of controlling the Switch—Dynamic Switching, Manual control, control over the Network as a Network device, or Automatic Control via the SCSI bus itself or via a serial bus
- Bus Switching maintains correct termination, and only occurs at SCSI *bus free*
- Suitable for HVD, LVD or SE SCSI, or a mixture of these
- Rack mount or Desktop versions available
- Complete hardware-only solution- no software required.
- Automatic Switch Control using the standard Windows or Unix Scheduler

### AVAX INTERNATIONAL

8 Thompson Crescent  
Erin, ON N0B 1T0  
Canada

Tel: (519) 833-2900 or 800-443-4542

Fax: (519) 833-7469

[www.avax.com](http://www.avax.com) or [www.dataencryption.ca](http://www.dataencryption.ca)

The intranet connection can be to HostA, HostB.or any other Host on the network. The Switch acts as a Web server and the Switch SCSI connection is controlled by simple accesses to that Web page: These are provided as small .exe programs *swhostA.exe* and *swhostB.exe* that can be called from the Windows Scheduler on any system on the local intranet.

## Technical Specifications

All enclosures attach with 68-way standard SCSI III connectors.

Compatible with any SCSI device

Universal Power Supply.97 -260 VAC

Desktop Enclosures : A4 footprint Rack mount Enclosures: 1U

Ethernet connection via standard RJ45 10/100Mb

Avax International specializes in tape, backup and security solutions.

Please contact Avax for tape drives, tape libraries, tape emulators, tape duplicators and tape encryption devices as well as disk-to-disk and disk-to-disk-to-tape backup appliances.

Available from:

